

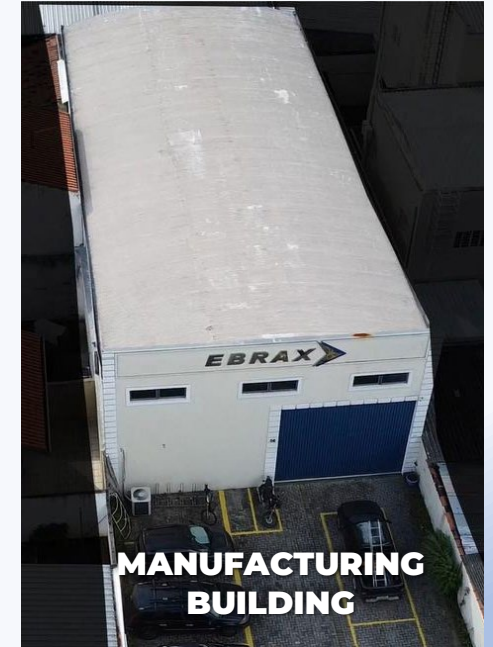
EBRAX
ATM SECURITY LLC



Our story:

EBRAX was founded in 2001

"Anti-Skimming" revolutionizing the ATM protection market in Brazil and worldwide.



Our market:

- **Present in 13 countries around the world**
- **+180,000 devices sold**
- **Partnerships with major players in the industry**

Main Products:

- **Anti-Skimming**
- **Anti-Shimming**
- **Safe Guard System**
- **Smoke Dispersal System**
- **Passive to Active Staining System**



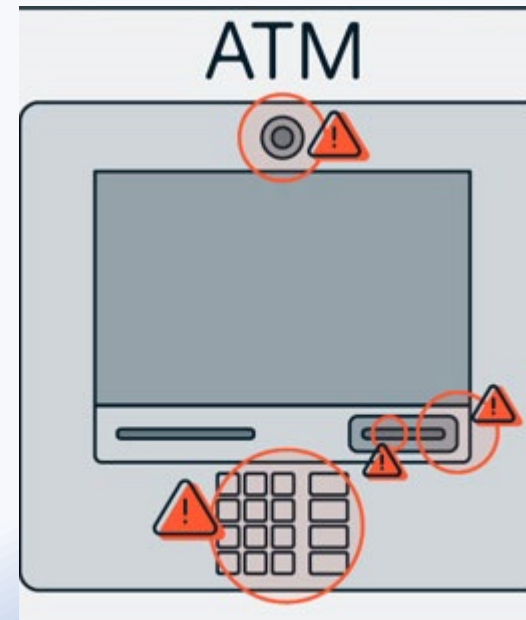
SKIMMER

ATM skimming is a financial fraud where card information data are stolen at ATMs, POS or fuel pumps.

Skimmers are designed to look like part of the ATM and are attached to card readers to capture payment card data.

Common card skimming methods:

- Overlaid card readers
- Overlaid Keypad
- Tiny cameras
- Skimmers placed inside the card reader



M.A.S.S.

MODULAR ATM SECURITY SYSTEM

The MASS is a security equipment developed to be installed in ATMs. Through the Overlay Sensor, the fraud intent is detected in real time.

Upon detection, MASS actions includes:

- Sounding an alarm signal;
- Activation of a jamming signal;
- Disabling critical functions of the ATM;
- Two configurable dry-contact output ports;
- USB signaling.

}

Those actions hinders the operation of the fraudulent (skimming) device.



M.A.S.S.

FLEXIBILITY AND MODULARITY FOR CUSTOMIZED SOLUTIONS

Modular concept, granting flexibility.

It provides the *exact* solution for customers needs with a minimum necessary hardware.

Available modules:

- Bluetooth Module
- Alarm Module
- Communication Module
- Actuator Module
- Ethernet Module
- Battery Module
- Logger Module
- Up to 8 Overlay Sensor (Capacitive)
- ...



Overlay Sensor

DETECTING AND ALERTING EXTRA MATERIAL WITH A CAPACITIVE SENSOR

Overlay Sensor detects additional materials immediately and triggers an alert mode in the Control Module. If the alert condition remains active, alarm mode is triggered.

- Alarm temporization customizable;
- Advanced Compensation Algorithm;
- Sensibility and detection levels customizable;
- Status LED;
- Fault Detection;
- **Detect and Report**



Overlay Sensor

EXAMPLE OF DETECTABLE FRAUD



Shimming Sensor

ENHANCING FRAUD DETECTION WITH ANTI-SHIMMING TECHNOLOGY

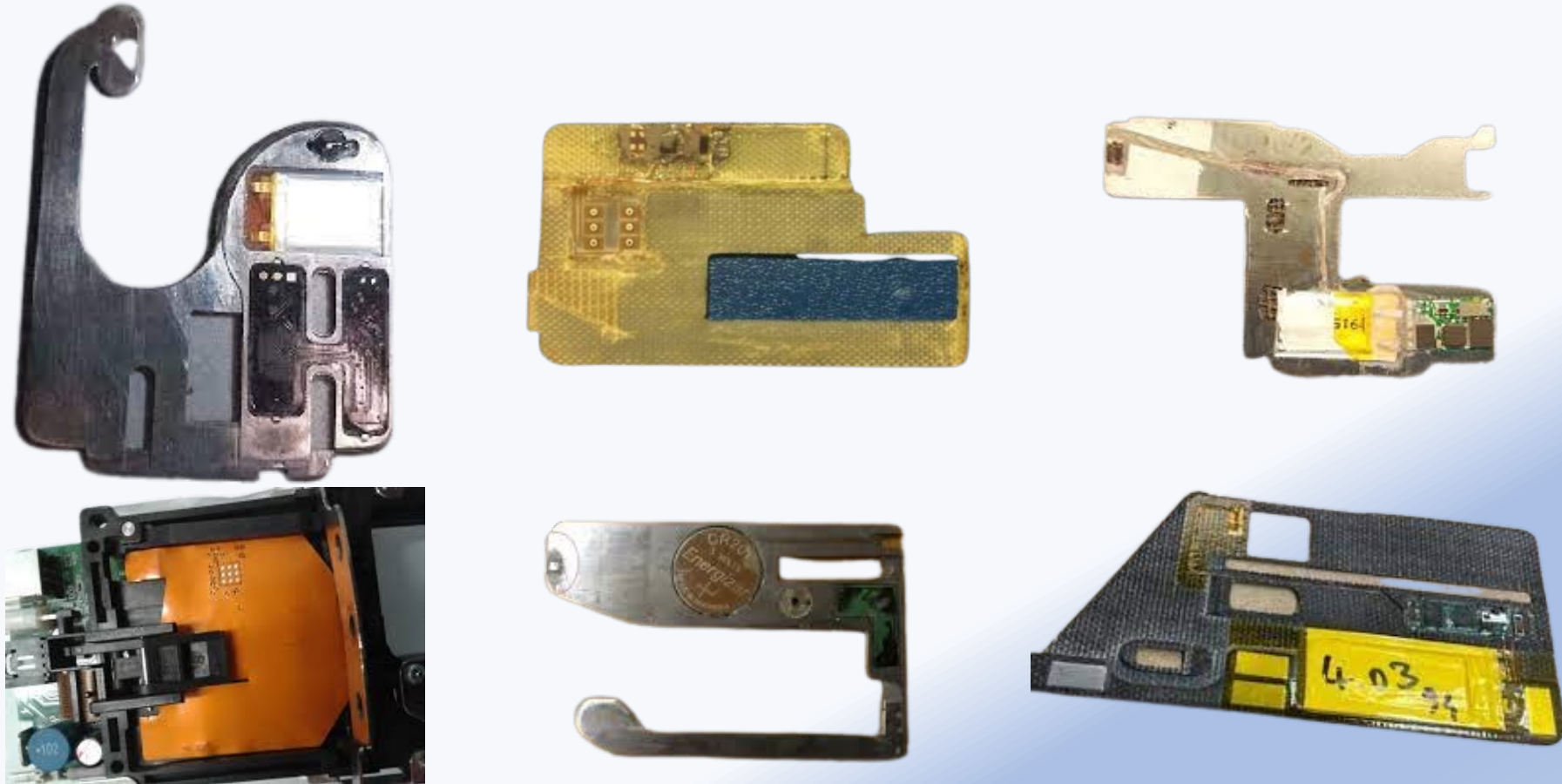
Anti-Shimming is designed to monitor the internal part of the card reader for insertion frauds, where the standard overlay sensor cannot reach.

- Alarm temporization customizable
- Advanced Compensation Algorithm
- Sensibility and detection levels customizable
- Status LED;
- Fault Detection
- Wide range of supported card reader
- **Detect and Report**



Shimming Sensor

EXAMPLE OF DETECTABLE FRAUD



Operation

ENHANCING FRAUD DETECTION WITH ANTI-SHIMMING TECHNOLOGY

Once an object is *d e t e c t e d*, the sensor enters in Alert Mode, where a configurable timer ticks while the object remains.

When the Alarm Time reach a prograded value, the **MASS** enters Alarm Mode, signaling to all connected peripheral this condition.



Alarm Signaling

ENHANCING FRAUD DETECTION WITH ANTI-SHIMMING TECHNOLOGY

The MASS contains several ways to signal its alarm, alert and general status.

Available Signaling Modules:

- Alarm Module: Dry Contact
- Communication Module: USB Port
- Ethernet Module
- RS-485 Module



Instant Prevention and Inhibition

Video Power

Turn ATM video monitor ON/OFF, preventing the use of compromised equipment.



Transducer

Emits electromagnetic pulses in a random manner, interfering with the operation of the skimming device.

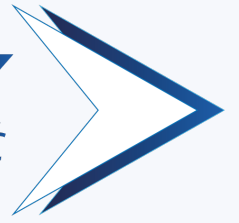


M.A.S.S.

Capabilities:

- Plug and Play Installation
- Jamming Signal under Alarm
- Alarm temporization customizable
- Dip and motorized card readers supported
- Can detect any type of material
- Scalable
- Multiple Alarm Signaling OptionsModule
- Proprietary algorithm that compensates environment changes
- It is compatible with all brands and models of ATMs available on the market.

EBRAX
ATM SECURITY LLC



·901 N. Market St. suite 705 Wilmington, New
castle county. Delaware 19801·

Mailing Address

777 Brickell Ave. Suite 1210, Miami, FL, 33131



info@ebrax.net



+549 11-6743-6697



www.ebrax.net